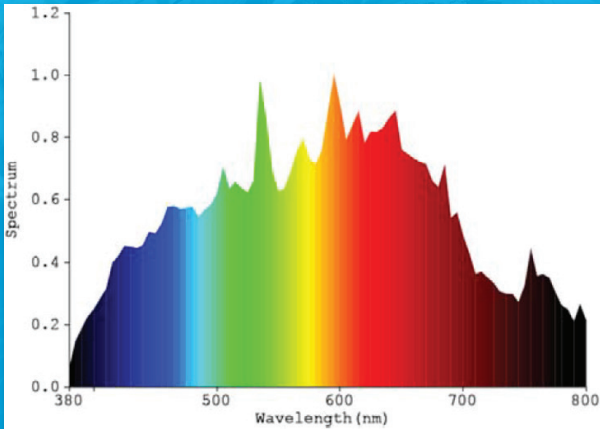


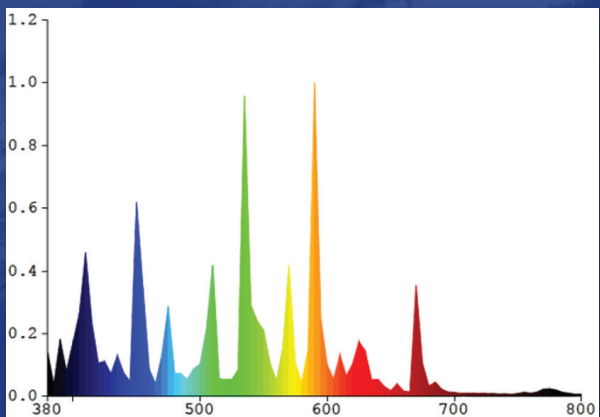
## HPS

- 1000W double-ended HPS grow light
- Photon flux at 28" height: up to 720  $\mu\text{mol/s/m}^2$
- 4' x 5' footprint
- 0-10V/PWM or Step Dimming
- Choice of 2 input voltage ranges (230V, 110-240V universal)



## CMH

- 630W double-ended CMH grow light
- Photon flux at 20" height: up to 850  $\mu\text{mol/s/m}^2$
- 4' x 5' footprint
- 0-10V/PWM or Step Dimming
- Choice of 2 input voltage ranges (230V, 110-240V universal)



## MH

- 1000W double-ended MH grow light
- Photon flux at 28" height: up to 720  $\mu\text{mol/s/m}^2$
- 4' x 5' footprint
- 0-10V/PWM or Step Dimming
- Choice of 2 input voltage ranges (230V, 110-240V universal)

A - 1281 Reamwood Ave. Sunnyvale CA, 94089

E - [info@AEssenseGrows.com](mailto:info@AEssenseGrows.com)

P - Toll Free: +1.800.369.8673  
+1.650.564.3058

W - [AEssenseGrows.com](http://AEssenseGrows.com)

### Follow Us



[facebook.com/AEssenseGrows](https://facebook.com/AEssenseGrows)



[@AEssenseGrows](https://twitter.com/AEssenseGrows)



[@AEssenseGrows](https://instagram.com/AEssenseGrows)



# ÆXcel™

Follow Us



facebook.com/AEssenseGrows

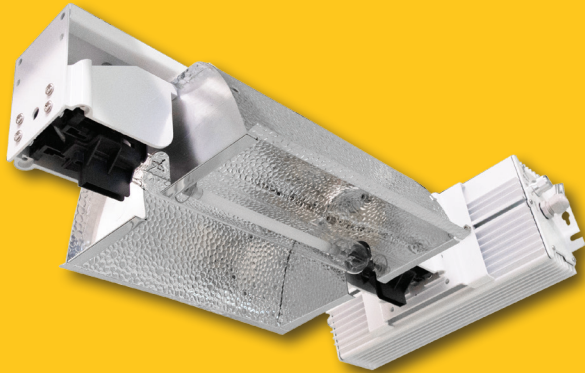


@AEssenseGrows



@AEssenseGrows

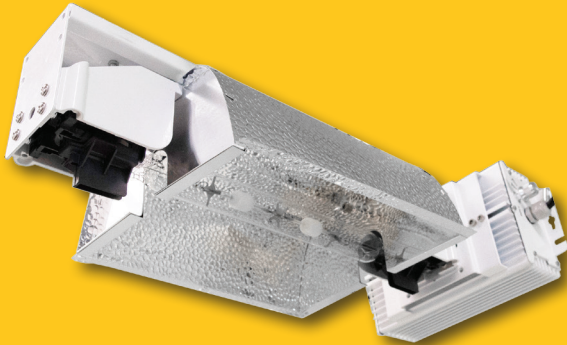
## > Low Cost HID Lighting Systems



1000W

### ÆXcel™ HPS

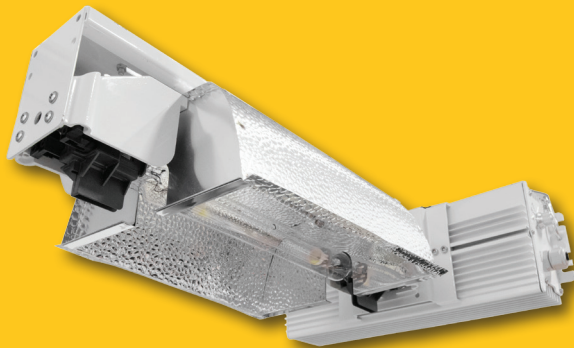
High Pressure Sodium - FXH1000/BHHPS1000



630W

### ÆXcel™ CMH

Ceramic Metal Halide - FXH0600/BHCMH0600



1000W

### ÆXcel™ MH

Metal Halide - FXH1000/BHMH1000